



Alexandra Parade Drain Deck Replacement project

Works start near Napier Street early October

Built in the 1850s, the Alexandra Parade main drain is a bluestone u-shaped channel covered by a concrete deck. It runs under the Alexandra Parade central median in Collingwood/ Fitzroy. In some sections the concrete deck is in poor condition and needs to be replaced. Work to replace sections of the concrete cover between Nicholson and Gold Streets will begin from Monday 2 October and expected to be completed by April 2018.

Vegetation removal and pruning

The drain runs under the Alexandra Parade median close to the city bound traffic lanes. We have worked hard to avoid tree removal and have been able to modify the construction methodology to protect large mature trees. There are 33 semi-mature trees currently located above and close to the drain which will need to be removed to allow the work to take place.

We have identified areas within the median, adjacent to the work zone, to plant replacement semi-mature trees once the works are complete. Trees will be planted away from the drain and roadside.

Trees along the median listed on the City of Yarra's Significant Tree Register will be protected, although some pruning may be necessary. The project team has developed a construction methodology to minimise the works footprint and redesigned the deck near significant trees to reduce the number of trees removed. A qualified arborist will be on site and tree protection measures will be in place.

A map over the page identifies the trees that are to be removed and pruned and the location of the drain and other service assets. The planting map and tree species can be found at melbournewater.com.au/alexandraparade or join us at one of the project's drop in sessions to find out more.

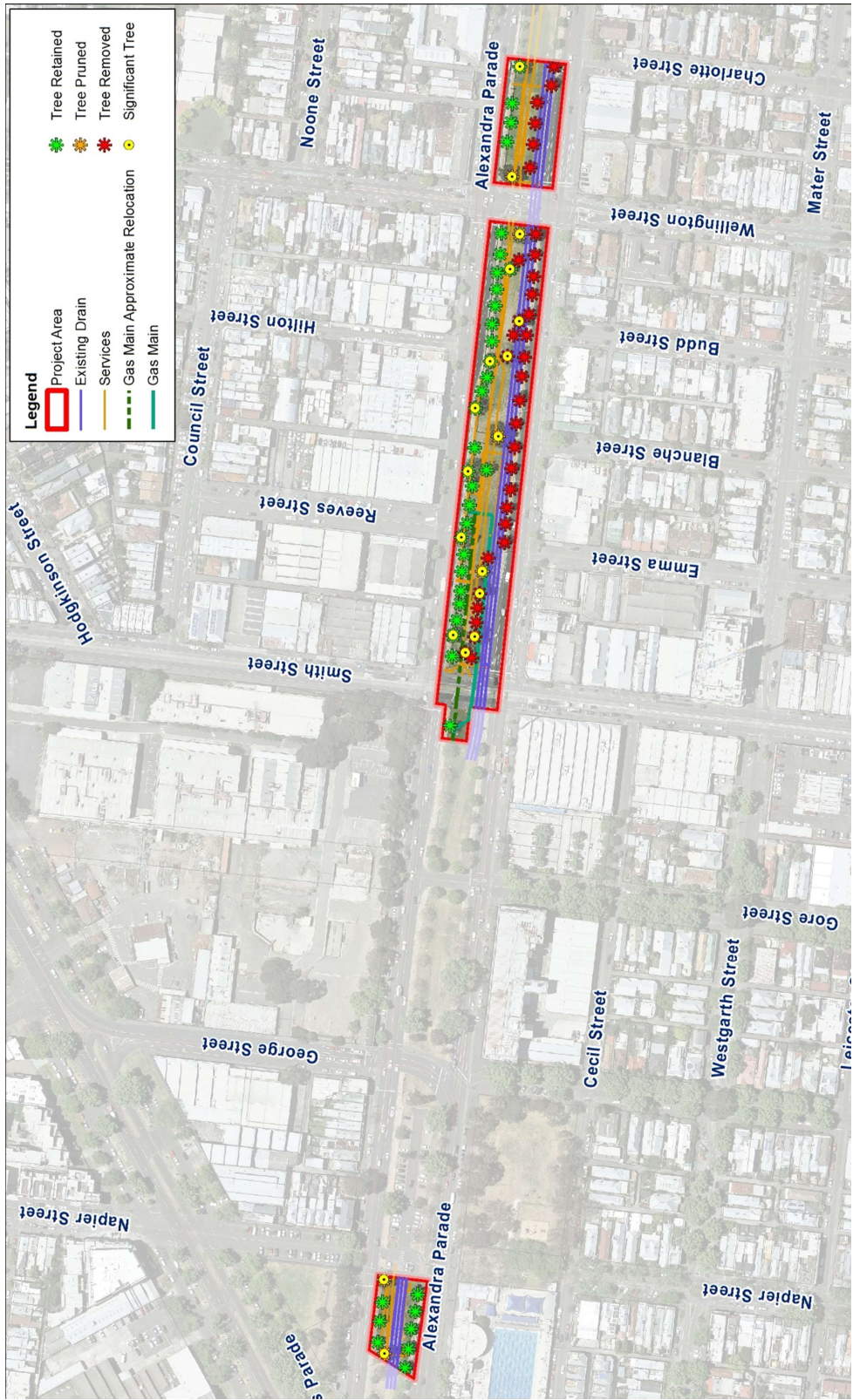
Drop-in sessions

The project team will be available to discuss the project further on the following days and times. If you are unable to make the days below, we encourage you to call 1800 316 713 to discuss your questions or organise an alternative time to meet.

Thursday 21 September, 3:30pm to 5:00pm

Saturday 23 September, 10:00am to 11:30am

Locations: Fitzroy Pool reception area, 160 Alexandra Parade, Fitzroy; and Shakers & Stirrers Café, 610 Smith Street, Clifton Hill.



The map above identifies the status of the trees within our work zones.

Works starting west of Napier Street

From Monday 2 October, work to replace the concrete deck will commence in the central median west of Napier Street.

You will notice the installation of fencing and arrival of equipment to site. For this section of works there will be no changes to traffic flow in the area and no vegetation removed.

Once we have started working west of Napier Street we will progressively set up our work zones between Smith and Wellington Streets and start tree removal.

To safely deliver large equipment and work near traffic flows we will also work after hours - 11pm to 5am - during October. During this time additional noise may be experienced.

Pedestrian and cyclist flow maintained – we will maintain pedestrian and cyclist access through the area however, the path width will decrease at times to accommodate our works.

Car parking – Closure of the 30 minutes car parking bays will allow pedestrian and cyclist thoroughfare. Parking for people with a disability will be moved to an adjacent car parking location. Signage will provide further details.

What will I notice?

There will be changes in the area while we complete the works. We aim to minimise inconvenience as much as possible, but recognise

Work hours – Work will take place Monday to Friday 7am to 6pm, and Saturday 7am to 1pm. Quiet work may take place after these hours including office work and tidying up. Vehicles will start accessing the site compound before 7am.

Site compound – Site compound will be set up near our works. Amenities will be located within our work zone for workers.

Dust – The site will manage dust on site with measures including use of a water cart to suppress dust when required.

Noise – An increase in noise is expected in the area due to the operation of vehicles, machines and workers on site.

Fence – A fence will be installed around the work zone and no public access will be permitted.

Signage – To accommodate our works road signage will be removed. It will be replaced at the end of the project, or if essential, notification moved to alternate location.

Light poles – Some light poles will be removed during the works. Temporary lights will replace the poles to ensure adequate levels of lighting.

Changes in traffic conditions

An increase in truck traffic will take place due to the works. We expect at peak approximately 20 trucks and deliveries to site per day.

Some sections of the drain are located very close to the through traffic flow and Smith and Wellington Street right hand turn lanes (heading to city). For up to four weeks at each location, but not at the same time, the right hand turning lane will be closed. Detours will be in place.

Through traffic on Alexandra Parade will be maintained at all times. During our works between Smith and Gold Streets lanes heading city bound will be narrowed to maintain three lanes of traffic. We expect to commence working in this area in October/November 2017 and complete work in February/March 2018.

Traffic lights – to accommodate our works we need to remove traffic lights. Adequate signage and temporary alternate lights will be in place to ensure traffic flow is managed safely.

Bicycle lane closure between Smith and Wellington Streets

To maintain three lanes of traffic on Alexandra Parade (city bound) between Smith and Gold Street the bike lane will be closed. We are currently exploring local detours and will provide adequate notification of the change and advised detour route.

Smith Street closure at Alexandra Parade

To replace the concrete deck under Smith Street, including the tram tracks, we will work 24/7 from 2am Friday 1 December to 5am Tuesday 5 December. Smith Street will be closed to through traffic at the intersection of Alexandra Parade during this period. Additional notification will take place leading up to the works.

Keep up to date with what's happening

For more information about this project or our other activities please 1800 316 713, email alexandraparade@melbournewater.com.au or visit www.melbournewater.com.au/alexandraparade



Interpreter

For an interpreter, please call the Translating and Interpreting Service (TIS National) on 13 14 50



Like us

facebook.com/melbournewater



Follow us

@MelbourneWater



Visit us

www.melbournewater.com.au